

# NVRModuleCustomTool

Software Client

## User Manual




Manual Version: V1.1.0

## Disclaimer

- The illustrations in this manual are for reference only and may vary depending on the software version.

## Document Conventions

Convention	Description
<b>Boldface font</b>	Commands, keywords, parameters and GUI elements such as window, tab, dialog box, menu, button, etc.
<i>Italic font</i>	Variables for which you supply values.
>	Separate a series of menu items, for example, <b>Device Management &gt; Add Device</b> .

Symbol	Description
 <b>WARNING!</b>	Contains important safety instructions and indicates situations that could cause bodily injury.
 <b>CAUTION!</b>	Means reader be careful and improper operations may cause damage or malfunction to product.
 <b>NOTE!</b>	Means useful or supplemental information about the use of product.

# Contents

1 Product Introduction .....	1
2 Environment Setup .....	1
2.1 PC Hardware Configuration .....	1
2.2 Firewall Setting .....	1
2.3 Software Environment Requirements .....	1
3 Login .....	1
3.1 Open Home Page .....	1
3.2 Add Tabs .....	3
4 Customization .....	3
4.1 Custom Page Description .....	3
4.2 Customization/Upgrade .....	9

# 1 Product Introduction

---

This software tool is intended for NVR manufacturers to customize NVR brands and upgrade NVR versions.

Module description:

Module	Sub-module	Function
Comprehensive Module	Configure customization information	Configure NVR customization plans
	Import customization/upgrade	Import customization information, upgrade IPC version

## 2 Environment Setup

---

### 2.1 PC Hardware Configuration

Win7/Win10 professional edition, 64-bit; 8G RAM or higher.

### 2.2 Firewall Setting

Please turn off the firewall on the PC before use.

### 2.3 Software Environment Requirements

The software application requires you to install Microsoft .NET Framework 4.5 on the computer. Microsoft .NET Framework 4.5 is available for download at the following URL:

<https://www.microsoft.com/zh-cn/download/details.aspx?id=30653>



**NOTE!**


For Windows 10, Microsoft .NET Framework is supplied with the operating system and requires no separate installation.

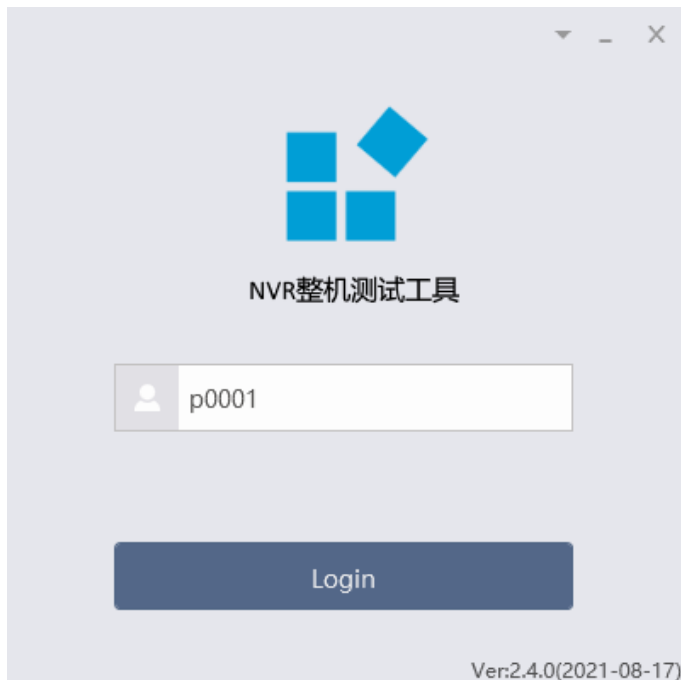
---

## 3 Login

---

### 3.1 Open Home Page

1. Start the computer, double-click the  icon., The login page appears. Enter any username and password to log in.



2. For first-time use, you need to import the license file for authorization.



After the authorization is successful, you can log in directly.

3. When the remaining time of authorization is less than 30 days, the following dialog box will pop up when logging in

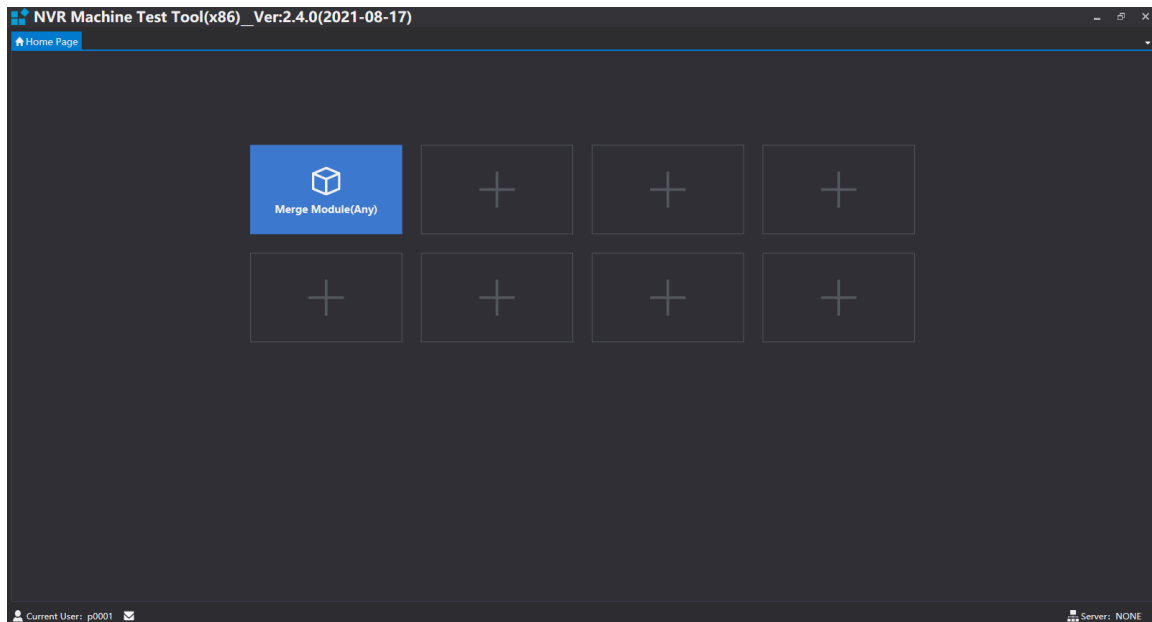
- (1) Import the new license file and click <OK> to reauthorize;
- (2) Click <Cancel> to log in directly, and the following dialog box will pop up the next time you log in.



4. If the authorization expired, you need to obtain the authorization again in order to log in.

## 3.2 Add Tabs

After you are logged in, click <+> and choose the tabs you want to use.



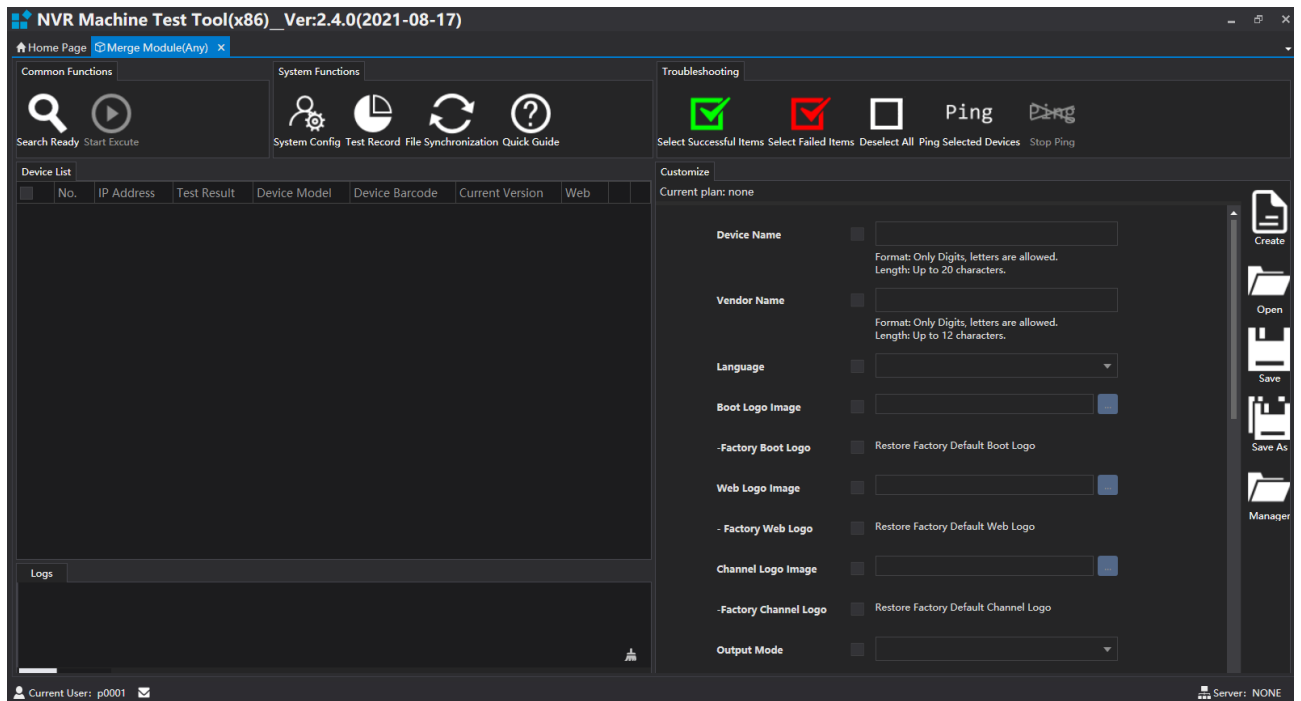
# 4 Customization

---

## 4.1 Custom Page Description

### 1. Enter The Page

Click <Merge Module> to enter the page.



After entering the customized information, click the <Save> button to save the customized solution.

## 2. Custom Page

The screenshot shows a 'Customize' window with a dark theme. At the top, it says 'Current plan: none'. Below this are several configuration options, each with a checkbox and a text input field or dropdown menu. The options are: 'Device Name' (checkbox, text input, format: Only Digits, letters are allowed. Length: Up to 20 characters.), 'Vendor Name' (checkbox, text input, format: Only Digits, letters are allowed. Length: Up to 12 characters.), 'Language' (checkbox, dropdown menu), 'Boot Logo Image' (checkbox, text input, blue button), '- Factory Boot Logo' (checkbox, text input 'Restore Factory Default Boot Logo'), 'Web Logo Image' (checkbox, text input, blue button), '- Factory Web Logo' (checkbox, text input 'Restore Factory Default Web Logo'), 'Channel Logo Image' (checkbox, text input, blue button), '- Factory Channel Logo' (checkbox, text input 'Restore Factory Default Channel Logo'), and 'Output Mode' (checkbox, dropdown menu). On the right side, there is a vertical toolbar with icons for 'Create' (document), 'Open' (folder), 'Save' (floppy disk), 'Save As' (floppy disk with plus), and 'Manager' (folder). At the bottom right, it says 'Server: NONE'.

The custom page is located on the right side of the entire page, and the content to be customized can be selected according to requirements.

Click <Create> will clear the customized information.

Click <Open> will open the saved scheme.

Click <Save> will save the current program.

Click <Save As> will re-save the current scheme.

Click <Manager> will enter the path saved the program.

For the selected customized information, if there is a verification error during verification, it needs to be re-entered or re-selected.

A close-up of a dropdown menu. On the left, there is a small square containing a white checkmark. To the right of the checkmark is a dark grey dropdown menu with a white downward arrow on its right side. To the right of the dropdown menu is a red circle with a white 'X' inside.



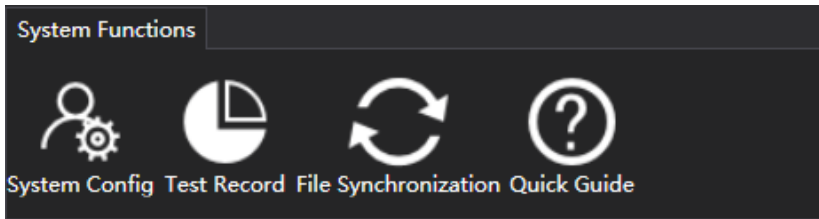


## NOTE!

This version has the function of automatically saving the latest customized information. After clicking “Start Execution”, it is saved in “Last Customized Information.utd”. When the software is opened the next time, the custom page will automatically refresh the latest customized information.

### 3. System Function Page

There are four buttons on the system function page, <System Config><Test Record><File Synchronization><Quick Guide>



#### (1) System Config

The System Config dialog box contains the following fields and options:

- Computer IP:** A dropdown menu currently set to "Whole Network Seg".
- Device Exception:** A dropdown menu currently set to "Alert Now".
- Default IP Customization:** A checkbox labeled "Not check when batch customization/upgrade" which is checked.
- User:** A text input field containing "admin".
- Password:** A text input field containing "123456".

At the bottom of the dialog are "OK" and "Cancel" buttons. A "Load" button is visible in the top right corner.

The computer ip can choose the manually set ip address and the entire network segment, whether to support the default ip customization can be selected according to the needs. It is recommended not to check when batch customization and upgrade, in order to avoid ip conflict exception.

#### (2) Test Record

测试记录查看器						
工单号		条码		<input type="button" value="查询"/> <input type="button" value="返回"/> <input type="button" value="导出"/>		
设备	版本号	工单号	条码	测试结果	开始时间	结束时间
UUT1	2.0.0		189802C06S0000000002	1	2020-12-10 10:27:18	2020-12-10 10:27:44
UUT1	2.0.0		189802C06S0000000002	0	2020-12-10 10:18:39	2020-12-10 10:18:44
UUT1	2.0.0		189802C06S0000000002	1	2020-12-10 10:16:24	2020-12-10 10:16:51
UUT1	2.0.0		189802C06S0000000002	0	2020-12-10 10:13:43	2020-12-10 10:13:48
UUT2	2.0.0		189802C06S0000000002	0	2020-12-10 10:00:23	2020-12-10 10:02:33
UUT3	2.0.0		210235C4C53203014732	1	2020-12-09 19:55:15	2020-12-09 19:55:17
UUT2	2.0.0		210235C4C53203012606	1	2020-12-09 19:55:15	2020-12-09 19:55:17
UUT3	2.0.0		210235C4C53203014732	1	2020-12-09 19:55:06	2020-12-09 19:55:08
UUT2	2.0.0		210235C4C53203012606	1	2020-12-09 19:55:06	2020-12-09 19:55:08
UUT1	2.0.0		210235C4C53203014732	1	2020-12-09 19:51:06	2020-12-09 19:51:08
UUT3	2.0.0		210235C4C53203013555	1	2020-12-09 19:51:06	2020-12-09 19:51:46
UUT3	2.0.0		210235C4C53203013555	1	2020-12-09 19:50:37	2020-12-09 19:51:18
UUT2	2.0.0		210235C4C53203014732	1	2020-12-09 19:50:37	2020-12-09 19:50:39
UUT1	2.0.0		210235C4C53203016588	1	2020-12-09 19:49:46	2020-12-09 19:49:49
UUT5	2.0.0		210235C4C53203014732	1	2020-12-09 19:49:46	2020-12-09 19:49:49
UUT3	2.0.0		210235C4C53203015443	1	2020-12-09 19:49:46	2020-12-09 19:49:50
UUT4	2.0.0		210235C4C53203012606	1	2020-12-09 19:49:46	2020-12-09 19:49:49
UUT1	2.0.0		189802C06S0000000002	0	2020-12-09 15:07:19	2020-12-09 15:11:04
UUT1	2.0.0		189802C06S0000000002	1	2020-12-08 19:32:25	2020-12-08 19:32:26

Click <Test Record> to record the test equipment. The red test record indicates that the test has not completed the test record of the equipment, and the black indicates the test record of the customized/upgrade equipment.

### (3) File Synchronization

Click < File Synchronization > to pop up the File Synchronization dialog box, you can set the computer as a client or a server.

File Synchronization
✕

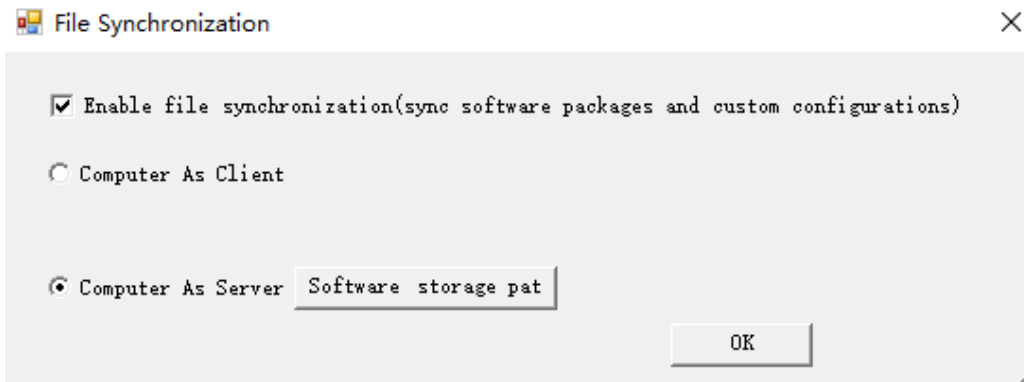
☒ Enable file synchronization(sync software packages and custom configurations)

☒ Computer As Client
 Server Address

☐ Computer As Server

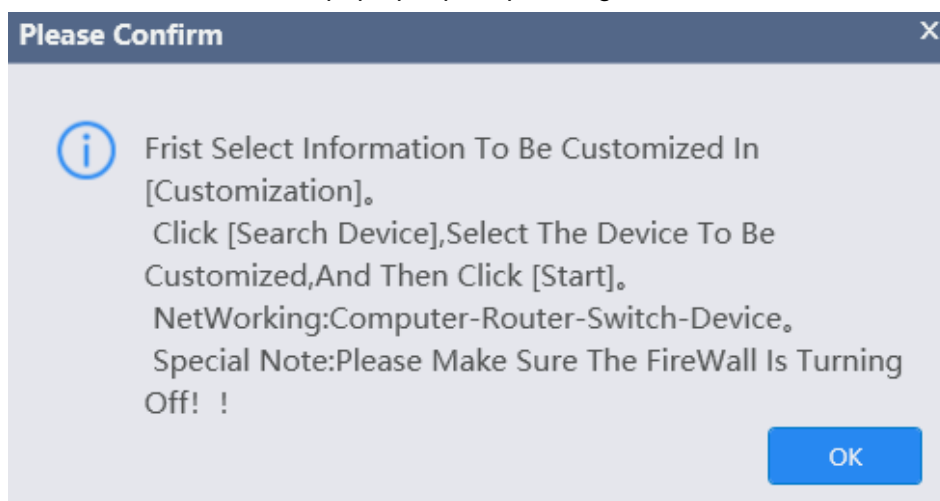
If the computer is set as the client, select the server address, and click the <click Sync> button to synchronize the customized information of the server.

If the computer is set as a server, you can click <Software Storage Path> to open the path, put the software in this path, and click <OK>. The saved software is copied to the \UserData\UserSetting\Software path during click Sync on the client.

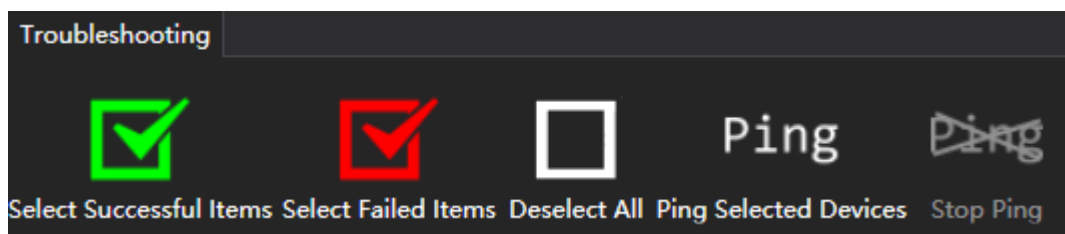


#### (4) Quick Guide

Click <Quick Guide> and pop up a prompt dialog box.



#### 4. Abnormal Location Page



<Select Successful Items> is used to check the devices that have been successfully tested;

<Select Failed Items> is used to check the devices that have been failed tested;

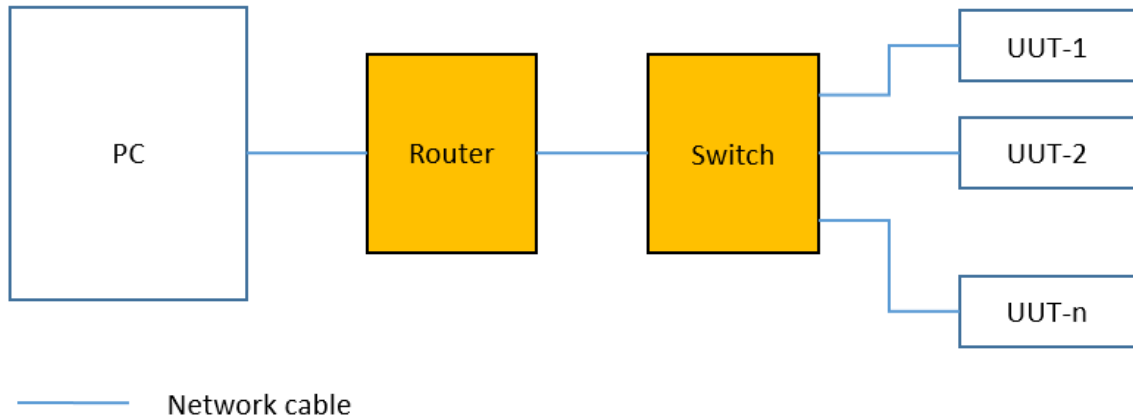
<Deselect All> will clear the previously checked devices;

<Ping Selected Devices> will ping the checked devices, during the ping process, the indicator light of the network port of the device will flash, it can be used to find the devices that succeed or fail in the test in conjunction with <Batch Check Success>< Batch Check Fail>.

<Stop Ping> will stop pinging the device.

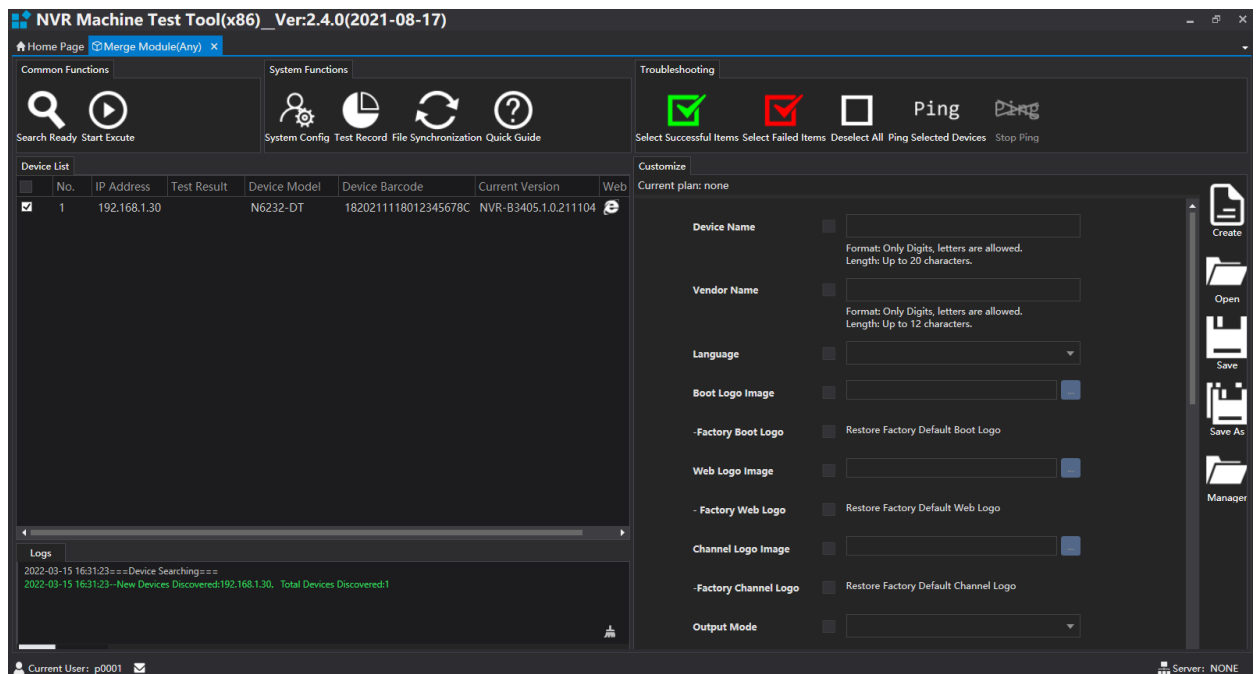
## 4.2 Customization/Upgrade

### 1. Networking



### 2. Custom Information Import

- (1) Click the <Search Ready> button to search for devices
- (2) Check the searched devices, select the device that needs to be customized, the system will automatically check all the searched devices.
- (3) Click <Start Excute> button to start the customization/upgrade test.



When the following prompt dialog box pops up, it means that the device does not support customization and the test fails.

